

EC-101

960H x10 Zoom Camera



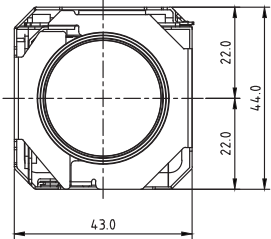
FEATURES

- 1/3" 1.4MP SONY CMOS Sensor
- x10 Optical Zoom(5.1~51mm) & x32 Digital Zoom
- High Resolution 800 TV lines
- Day & Night(ICR)
- WDR(Wide Dynamic Range)
- DNR(Digital Noise Reduction: 2D + 3D)
- Privacy Mask Function
- High Light Compensation
- Intelligent Motion Detection
- Defog Function
- Supports VISCA, Pelco-D/P Protocol

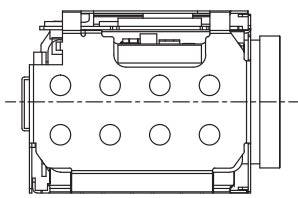
DIMENSIONS

Unit : mm

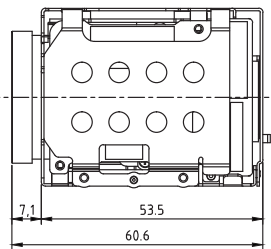
FRONT



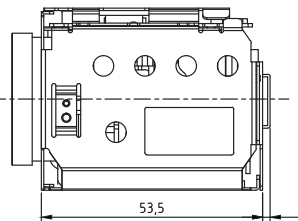
LEFT SIDE



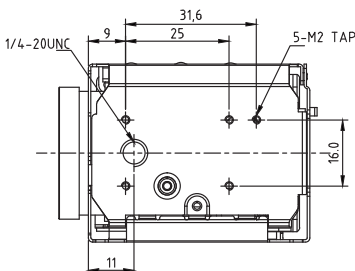
TOP



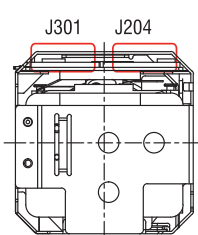
RIGHT SIDE



BOTTOM



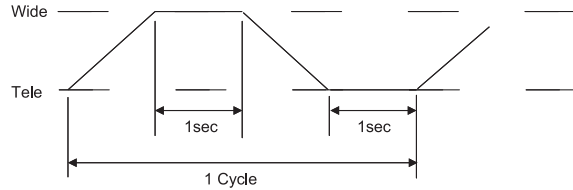
BACK



Reliability and Environment Condition(x10)

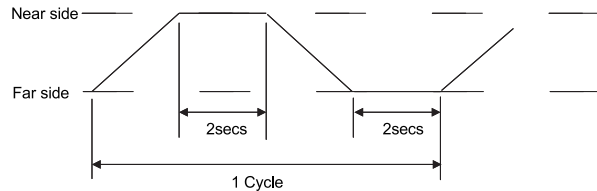
1. Zoom

- (1) Zoom operation cycle : 200,000 cycles
- (2) Operation condition : See below
- (3) Test condition : Normal temperature



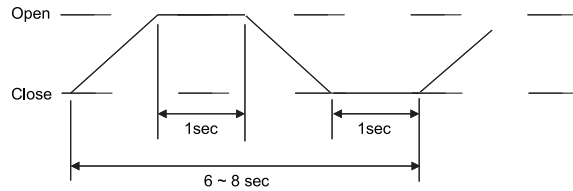
2. Focus

- (1) Focus operation cycle : 200,000 cycles
- (2) Operation condition : See below
- (3) Test condition : Normal temperature



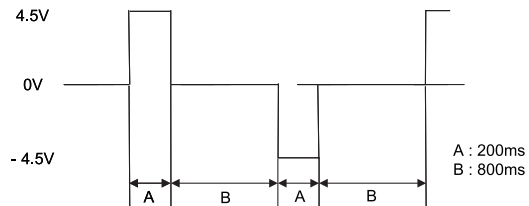
3. Auto-iris

- (1) Auto-iris operation cycle: 50,000 cycles
- (2) Operation condition : See below
- (3) Test condition : Normal temperature



4. IRCF

- (1) IRCF operation cycle: 50,000 cycles
- (2) Operation condition : See below
- (3) Test condition : Normal temperature



SPECIFICATIONS

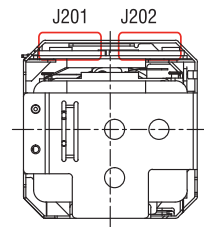
EC-101				
Image Sensor	1/3" Sony CMOS Sensor			
Total Pixels	1,312(H) x 1,069(V), 1.4M Pixels			
Active Pixels	1,296(H) x 1,041(V), 1.35M Pixels			
Scanning System	Progressive Scan			
Sync. System	Internal			
Resolution	Analog : 800TVL			
Min. Illumination	Color : 1.0 lux, BW : 0.5lux, Color DSS : 0.002 lux, BW DSS : 0.001 lux			
Video Output	Analog : NTSC, PAL			
S/N Ratio	more than 50dB (AGC off)			
Lens Type	x10 Day & Night Zoom Lens			
Zoom Ratio	Optical x10, Digital x32 Zoom			
Focal Length	f = 5.1mm ~ 51mm			
Aperture Ratio	F1.6 (wide) ~ F1.8 (tele)			
AngleofView(D,H,V)	Wide	68°	54°	31°
	Tele	6.7°	4.9°	4.0°
Focus	Mode / Distance /Zoom Speed/Lens Refresh / E.Zoom			
Mode	Auto / One Push / Manual			
Distance	0.1 / 1.0 / 3.0 / 5.0 / 10.0 m			
Lens Refresh	One Push / 1 ~ 10Day			
Digital Zoom	Off / MAX x2 ~ x32			
Exposure	Auto / Iris.P / Shut.P / Manual			
AGC	Off / On			
Shutter Speed	1/60(50) ~ 1/60,000 sec			
Iris	0 ~ 20			
DSS	Off / Max x2 ~ x4			
Brightness	0 ~ 20			
WDR/BLC	OFF / WDR / BLC			
Day&Night	Day / Night / Auto / Ext-in			
White Balance	Auto / One Push / Manual / Indoor / Outdoor			
HLC	Off / On / Night			
DNR	Auto / Off / Low / Middle / High			
Mirror	Off / H / V / H&V			
Sharpness	0 ~ 10			
ACE	Off / Low / Middle / High			
Defog	Off / On(Auto / Manual)			
Privacy Mask	Off / 24 positions			
Motion Detection	Off / 3 positions			
Defect Detection	One Push			
System	NTSC / PAL			
Communication	Baud Rate : 2400 / 4800 / 9600 / 19200 / 38400 / 57600 / 115200			
	Protocol : VISCA / Pelco-D / Pelco-P / Update			
Disp Sel	ID / Title / Zoom Ratio / System Message			
Language	English / Simplified Chinese / Traditional Chinese/ Japanese			
Power Source	9V to 15V DC			
Power Consumption	250mA			
Power Input	Connector			
Video Output	Connector			
Storage Temperature	-20 °C ~ +60 °C (Humidity : 20%RH ~ 95%RH)			
Operating Temperature	-5 °C ~ +60 °C (Humidity : 20%RH ~ 80%RH)			
Dimensions	43(W) x 44(H) x 61(D)			
Weight	112g			

* Design and specifications are subject to change without notice.

Pin Assignment

J201	
1	RxD
2	TxD
3	GND
4	DC IN
5	GND
6	VIDEO
7	GND
8	EXT_VD
9	GND
10	
11	
12	
13	
14	
15	
16	
17	
18	
19	
20	

00-6200-509-130(KYOCERA ELC0)



J202	
1	SET
2	TELE
3	WIDE
4	NEAR
5	FAR
6	D&N IN
7	AD KEY
8	D&N OUT
9	MD OUT
10	485-DIR
11	TYPE SEL
12	+5V
13	GND
14	VIDEO
15	GND
16	TxD
17	RxD
18	GND
19	+12V
20	+12V

52689-2087(MOLEX)